

PRODUCT BRIEF

NautobotGPT

Bridging the Gap Between Automation Potential & Real-World Delivery



OVERVIEW

NautobotGPT is the first and only AI assistant built by NTC to help network teams adopt and deploy network automation with Nautobot. Designed by network engineers to accelerate automation efforts, NautobotGPT brings the agility and speed of low-code, the depth of full-code, and AI intelligence to every phase of network automation to make it more accessible, reliable and scalable.

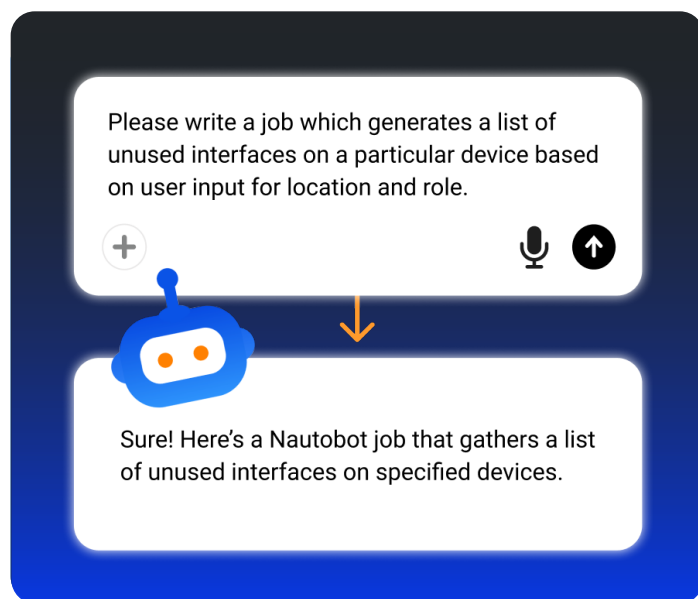
As the industry continues to evolve around AI, NautobotGPT removes the friction from building and scaling enterprise-class network automation from core concepts to advanced customization. It acts as an on-demand expert for everything Nautobot, turning questions into Nautobot Jobs, and errors into actionable solutions all through natural language. With NautobotGPT, teams can use natural language questions to:

- Get answers quickly based on proprietary Nautobot insights and practices.
- Create, edit, and troubleshoot Nautobot Jobs without writing code.
- Fix errors faster with AI-powered traceback analysis and step-by-step guidance.

Enterprises often rely on small groups with specialized skills to manage the whole network

automation process. By explaining Jobs, errors, data models, and architectural choices, NautobotGPT helps novice users create value while supporting skill development and growing the number of team members contributing to automation efforts.

It also speeds innovation from experienced engineers that have ideas but historically haven't had the cycles to execute them through traditional development efforts. What used to take 10-20 hours of Python development to ideate, test and create can now be done in 10-20 minutes. Similarly, troubleshooting automation errors that took hours can now be done in minutes.

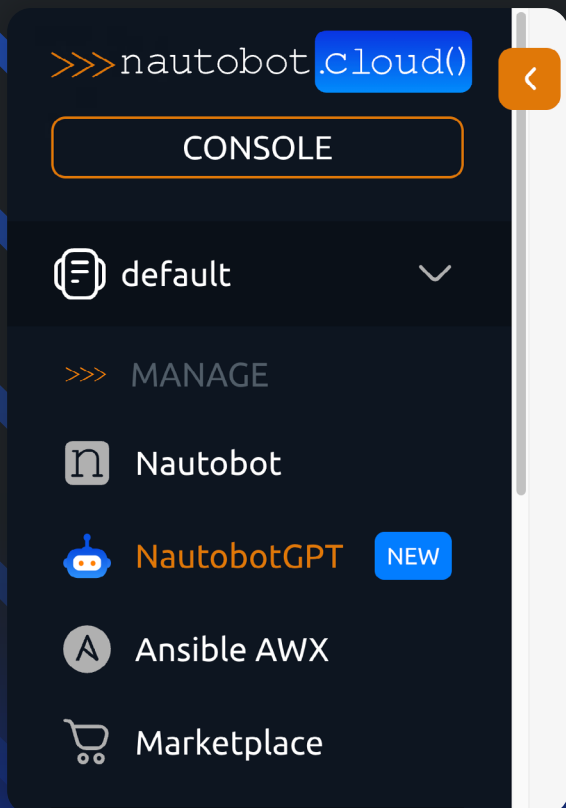


DESIGN & ARCHITECTURE

NautobotGPT's unique value stems from enhancing the capabilities of Large Language Models (LLMs) by injecting proprietary Nautobot knowledge, data, and information into them using a technique called Retrieval-Augmented Generation (RAG). This is what makes the product so powerful in assisting engineers and others in using, developing, and troubleshooting Nautobot.

When a user submits a prompt (e.g., "How do I write a job to get the next available IP?"), NautobotGPT analyzes intent and responds using:

- Enriched context from Network to Code's internal documents, knowledgebase, repositories, and other curated, proprietary Nautobot data
- The native model knowledge



DEPLOYMENT

NautobotGPT is tightly-coupled with Nautobot Cloud. Just as Nautobot or Ansible AWX instances are available for deployment within the Nautobot Cloud Console, NautobotGPT is also provided and deployed in a similar manner. It is provisioned exclusively through the Nautobot Cloud Console and runs in AWS.

Each customer receives their own, isolated NautobotGPT instance provisioned within their customer-dedicated AWS account. This instance allows an unlimited number of users and is fully provisioned and managed by Network to Code exclusively for that client.

This deployment architecture ensures:

- Single-tenant isolation
- Secure AWS-native deployment
- Simplified access and management through the Cloud Console

Deployments are conducted by Network to Code engineers in coordination with the customer.

NautobotGPT instances are not able to be self-provisioned by the client.

The process for new NautobotGPT deployments is as follows:

1. The customer's Nautobot Cloud AWS account is set up, if not already configured.

a. Refer to Nautobot Cloud reference material.

- i. [Nautobot Cloud](#)
- ii. [Nautobot Cloud Product Brief](#)

2. NautobotGPT is enabled in the customer's Nautobot Cloud environment.
3. Network to Code provisions the NautobotGPT infrastructure and configures it for the client.
4. Local accounts are created within NautobotGPT according to the provided users from the customer, with ongoing user creation and management via NautobotGPT admin access.
5. The customer is provided the NautobotGPT URL to access via HTTPS in a browser.

SECURITY

Security and privacy are foundational to NautobotGPT's architecture and operational model. From provisioning to daily use, the platform is designed with strong safeguards to protect customer data, enforce tenant isolation, and ensure enterprise-grade security at every layer, especially given its cloud-native footprint and use of AI.

Access Controls

Access to NautobotGPT is managed through local user accounts, which are created and authenticated within your deployed environment. Each user logs in with unique credentials via the web interface. User accounts are managed in-system, keeping general user access separate from administrative control. Customers can manage their own local accounts but do not have admin access to the underlying platform.

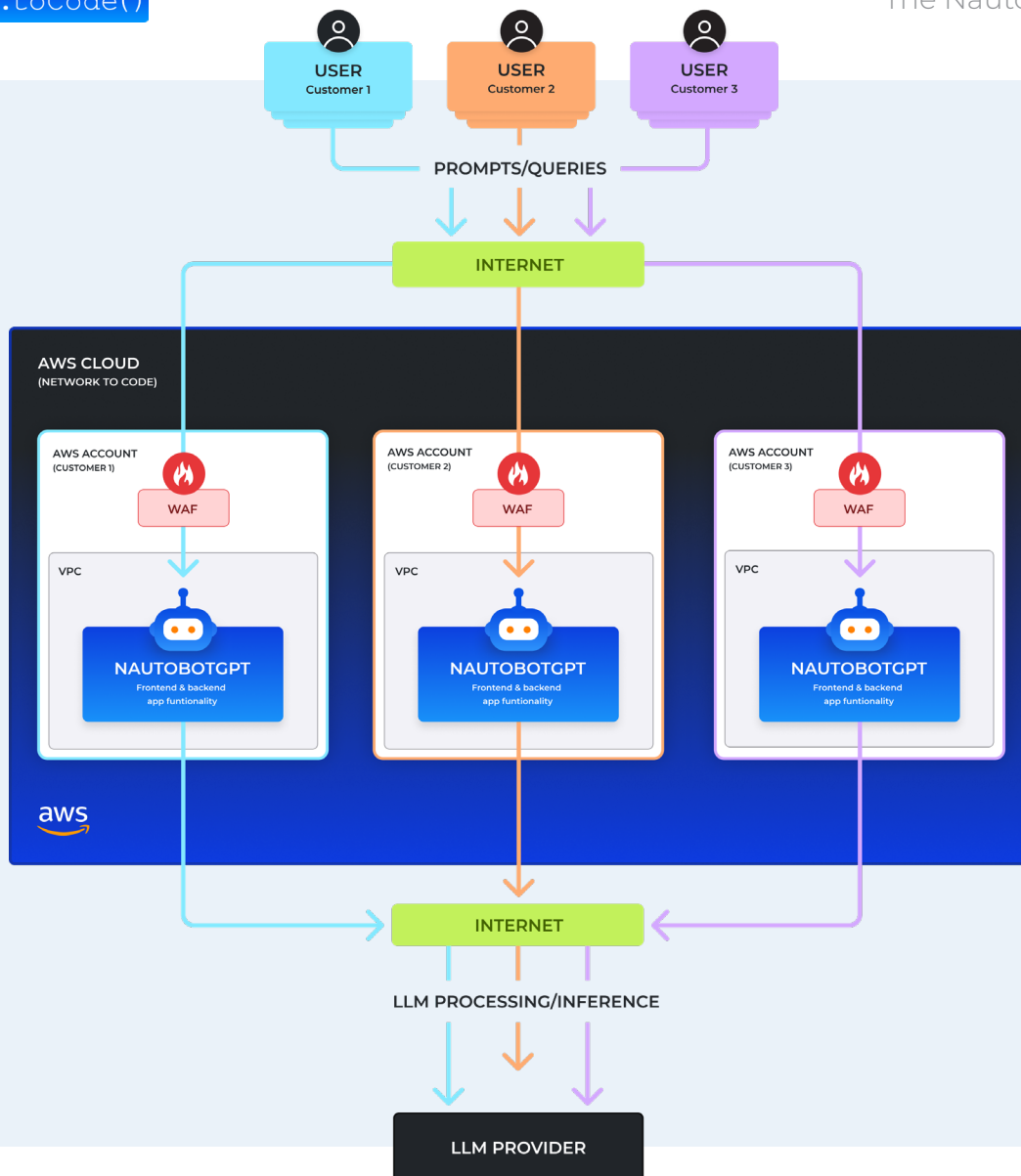
A customer's NautobotGPT instance is accessed publicly through the internet and is protected by

an AWS Web Application Firewall (WAF), which enforces security controls and filters traffic in line with industry best practices.

Data Handling & Privacy

NautobotGPT is designed to protect user data while delivering a reliable, context-aware AI experience. All messages and inputs are kept confidential within the deployed environment. Chat histories are stored locally to enable smooth, continuous conversations and are only visible to the individual user—never to other customers or external parties.

In limited cases, authorized Network to Code personnel may review chat histories for quality assurance, governed by strict access controls and logging. Reviews ensure accurate responses and consistent product quality. Chat content is never shared externally, used for marketing or sales, or to train or fine-tune the underlying AI model.



NautobotGPT transforms how network teams use their Source of Truth, combining Network to Code's expertise with advanced AI for fast, context-rich help. From troubleshooting to writing Jobs, it's a secure, on-demand companion that speeds up work,

reduces friction, and drives automation—deployed easily through Nautobot Cloud.

[Visit our NautobotGPT webpage](#) and check out our [NautobotGPT blog to learn more.](#)

ABOUT NETWORK TO CODE

Network to Code is the global leader in network automation, trusted by enterprises worldwide for delivering more successful network automation deployments than any other company. Our flagship platform, Nautobot, is the leading Network Source of Truth and Automation platform, empowering organizations to fundamentally transform how their networks are deployed, managed, and operated.

Backed by our unique blend of automation expertise, software innovation, and proven NetDevOps methodologies, Network to Code delivers data-driven automation solutions that dramatically enhance network reliability, security, and efficiency—while significantly reducing operational costs.